



Griechenland Pflanzen

E. Willing



Cistaceae

Cistus

- Cistus creticus L. subsp. creticus
- Cistus creticus L. subsp. eriocephalus
- Cistus monspeliensis L.
- Cistus parviflorus
- Cistus salviifolius L.

Fumana

- Fumana arabica (L.) SPACH
- Fumana ericoides
- Fumana procumbens (DUNAL) GREIN. & GODR.
- Fumana thymifolia (L.) WEBB

Helianthemum

- Helianthemum aegyptiacum (L.) MILL.
- Helianthemum hymettium
- Helianthemum nummularium (L.) MILL.
- Helianthemum nummularium (L.) MILL. subsp. nummularium
- Helianthemum oelandicum (L.) DC. subsp. canum (L.) BONNIER
- Helianthemum salicifolium (L.) MILL.
- Helianthemum syriacum

Tuberaria

- Tuberaria guttata (L.) FOURR.

Stand 25.1.2021



Cistus creticus subsp. *creticus*
Korinthia, SSW Zemenos, 38°01'01"N, 22°36'00"E, 26.04.2018



Argolis, O Achladokampos, 37°31'26"N, 22°38'07"E, 18.05.2018



Cistus creticus subsp. *creticus*
Chalkidiki, NO Nea Skioni, 39°57'08"N, 23°32'17"E, 13.05.2019



Chalkidiki, O Polygyros, 40°21'20"N, 23°28'42"E, 20.05.



Cistus creticus subsp. *creticus*

Chalkidiki, S Plana, 40°21'15"N, 23°39'59"E, 27.05.2019



Cistus creticus subsp. *eriocephalus*



Cistus creticus subsp. *eriocephalus*
Etolia-Akarnania, NW Nafpaktos, 38°23'42"N, 21°48'40"E, 2.05.2013



Cistus creticus subsp. *eriocephalus*
Etolia-Akarnania, O Komboti, 39°06'11"N, 21°06'30"E, 03.05.2016



Cistus monspeliensis

Chalkidiki, SW Polygyros, 40°21'51"N, 23°24'32"E, 17.05.2019



Cistus monspeliensis

Lefkas, SSW Ag. Nikitas, 38°46'43"N, 20°36'14"E, 10.05.2016



Lefkas, S Nikiana, 14.5.1987



Cistus monspeliensis

Korinthia, Schinos, 38°02'04"N, 22°59'28"E, 04.05.2018



Cistus monspeliensis

Lassithi, Epano Sisi, 35°17'55"N, 25°32'26"E, 12.04.2017; 275.684



Cistus monspeliensis



Lassithi, Epano Sisi, 35°17'55"N, 25°32'26"E, 12.04.2017



Cistus monspeliensis

Chalkidiki, NO Nea Skioni, 39°57'08"N, 23°32'17"E, 13.05.2019



Cistus parviflorus

Lassithi, SSW Mochlos, 35°09'29"N, 25°53'49"E, 14.04.2017; 275.746



Cistus parviflorus

Lassithi, SSW Mochlos, 35°09'29"N, 25°53'49"E, 14.04.2017



Cistus parviflorus

Lassithi, Moni Toplou, 35°14'35"N, 26°14'55"E, 15.04.2017



Cistus parviflorus

Lassithi, ONO Ag. Ioannis, 35°03'36"N, 25°51'57"E, 19.04.2017

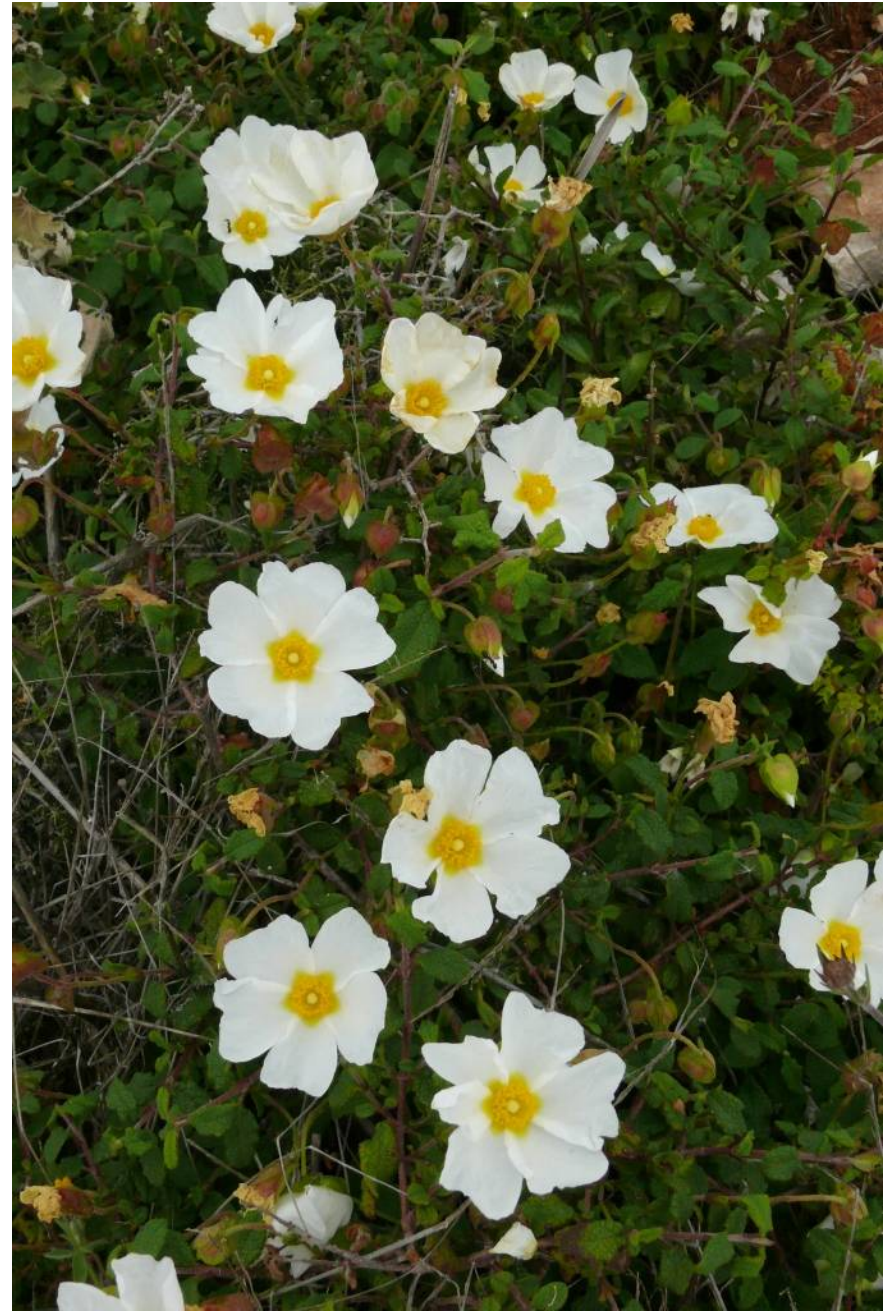
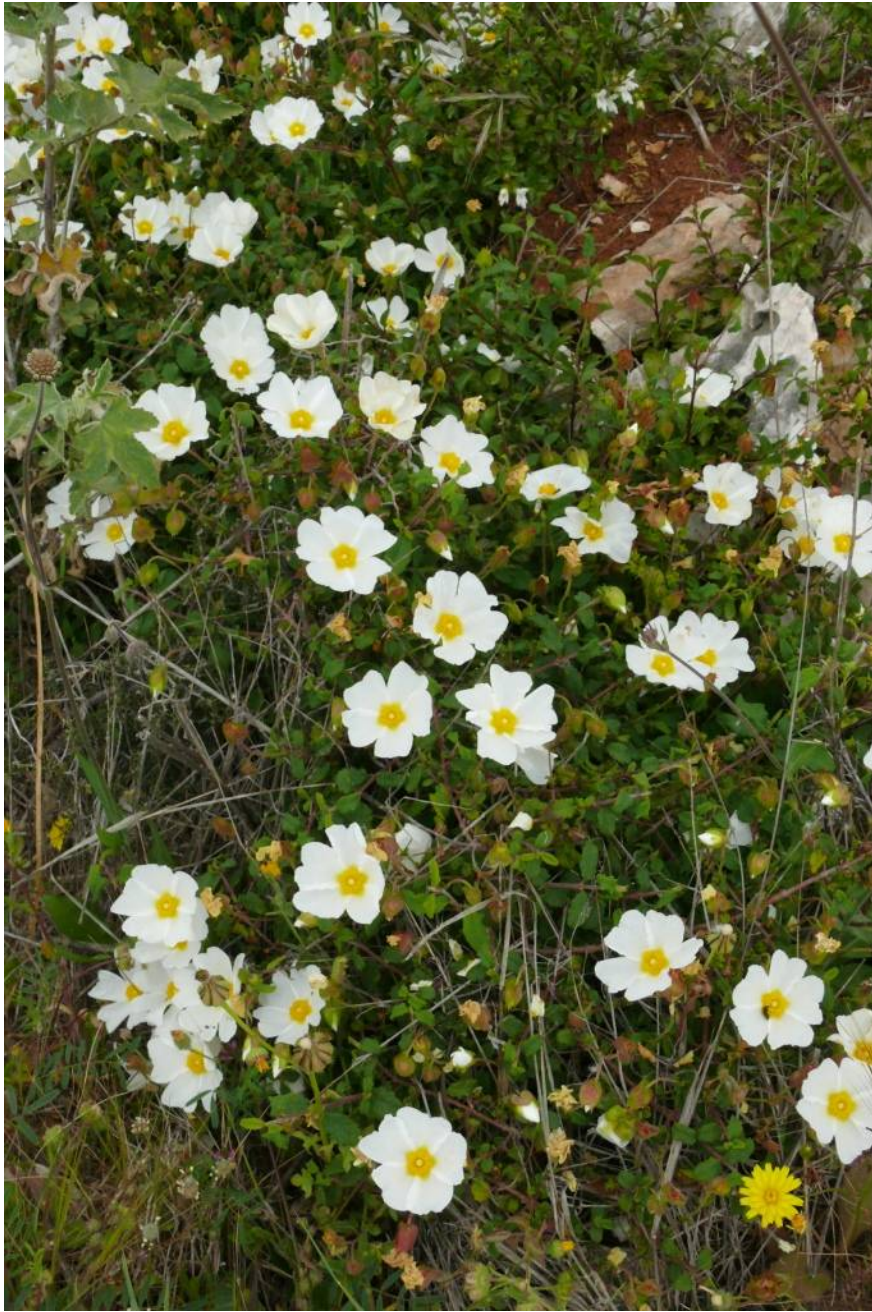


Lassithi, Moni Toplou, 35°14'35"N, 26°14'55"E, 15.04.2017



Cistus parviflorus

Lassithi, NW Latsida, 35°16'41"N, 25°34'34"E, 08.04.2017; 275.517



Cistus salviifolius

Evvia, S Aliveri, 38°23'24"N, 24°01'47"E, 26.4.11



Cistus salviifolius



Chalkidiki, O Polygyros, 40°21'20"N, 23°28'42"E, 20.05.2019



Fumana arabica

Xanthi, N Xanthi, 41°08'40"N, 24°52'52"E, 13.05.2015; 260.323



Fumana arabica

Kavala, N Zarkadia, 41°01'29"N, 24°38'18"E, 19.05.2015; 262.276



Xanthi, N Xanthi, 41°08'40"N, 24°52'52"E, 13.05.2015; 260.323



Fumana arabica

N Zarkadia, 41°01'33"N, 24°38'17"E, 19.05.2015; 262.301



Fumana arabica

Lassithi, W Armeni, 35°04'28"N, 26°05'02"E, 17.04.2017; 275.862



Fumana ericoides

Chalkidiki, N Simantra, 40°22'26"N, 23°19'40"E, 16.05.2019



Fumana procumbens
Ioannina, Konitsa, 40°02'29"N, 20°44'33"E, 21.09.2014; 245.938

Kozanis, O Dafnero, 655 m, 40°11'05"N, 21°35'48"E, 21.06.2017; 277.994



Fumana procumbens

Kozanis, NW Paleokastro, 40°13'01"N, 21°35'22"E, 03.10.2014; 248.742



Fumana thymifolia

Kreta, Lassithi, N Koutsounari, 35°01'52"N, 25°50'18"E, 19.04.2017; 275.950



Fumana thymifolia

Kozanis, SO Kalamia, 40°18'48"N, 21°42'18"E, 29.5.12



Larissa, N Tirnavo, 39°48'01"N, 22°16'16"E, 25.04.2008



Fumana thymifolia

Etolia-Akarnania, N Nafpaktos, 29.4.13

Korinthia, NO Evrostina, 38°05'43"N, 22°24'30"E, 02.05.2018; 285.529



Fumana thymifolia

Kreta, Lassithi, ONO Ag. Fotia, 35°12'21"N, 26°10'28"E, 15.04.2017; 275.794



Fumana thymifolia

Kreta, Lassithi, ONO Ag. Fotia, 35°12'21"N, 26°10'28"E, 15.04.2017; 275.794



Helianthemum hymettium

Korinthia, SW Evrostina, 38°03'34"N, 22°22'36"E, 02.05.2018; 285138



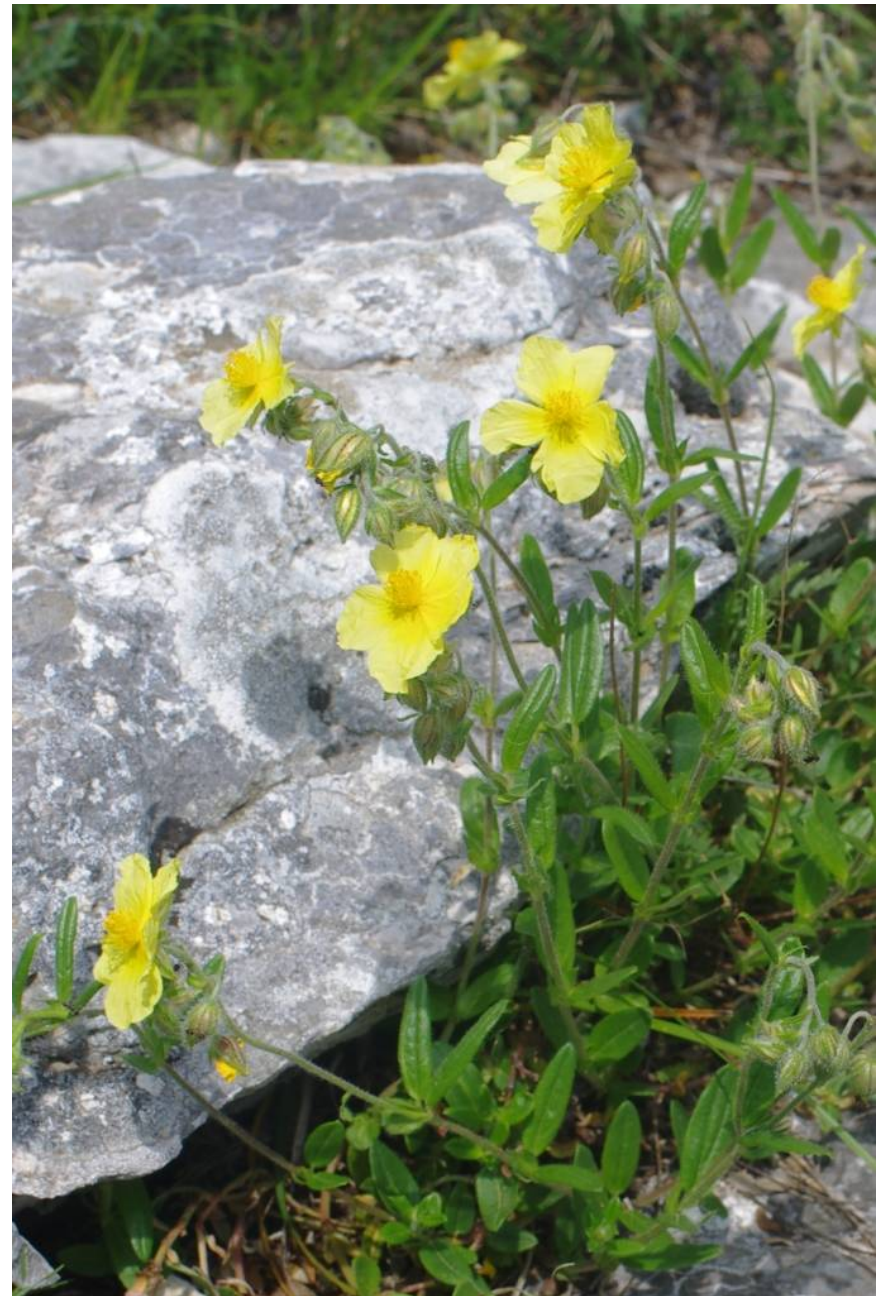
Helianthemum aegyptiacum

Halkidhiki, Ag. Anastasia, 40°28'44"N, 23°11'22"E, 24.04.2015; 254.744



Helianthemum nummularium subsp. *nummularium*

Xanthi, SW Komnina, 41°08'45"N, 24°43'11"E, 10.05.2015; 259.641



Helianthemum nummularium subsp. *nummularium*

Xanthi, SW Komnina, 41°08'45"N, 24°43'11"E, 10.05.2015; 259.641



Helianthemum nummularium subsp. *nummularium*
Grevena, SW Myrsini, 40°07'57"N, 21°28'48"E, 18.5.12



Falakron, 1365 m, 41°17'25"N, 24°01'42"E, 03.07.2017



Helianthemum nummularium subsp. *nummularium*

Preveza, SO Skepasi, 39°10'39"N, 20°38'36"E, 23.04.2016 266.993



Helianthemum nummularium subsp. *nummularium*
Ioannina, NW Metsovo, 1430 m, 39°47'00"N, 21°09'12"E, 15.06.2017; 276.779



Ioannina, S Anilio, 995 m, 39°44'48"N, 21°10'35"E, 18.06.2017; 277.382



Helianthemum nummularium subsp. *nummularium*

Ioannina, NW Metsovo, 1430 m, 39°47'00"N, 21°09'12"E, 15.06.2017; 276.779



Helianthemum nummularium subsp. *nummularium*

Arta, S Athamani, 39°22'20"N, 21°13'56"E, 19.05.2016 273.648



Helianthemum oelandicum subsp. *canum*

Korinthia, Ano Trikala, Limni Dasiou, 37°58'51"N, 22°25'39"E, 28.04.2018 284.717

Arkadia, W Mega Tourla, 37°16'37"N, 22°34'58"E, 26.05.2018; 291.213



Helianthemum oelandicum subsp. *canum*

Drama, Volakas, Falakron, 41°18'55"N, 23°59'39"E, 26.05.2015; 264.511



Helianthemum oelandicum subsp. *canum*

Drama, Volakas, Falakron, 41°18'55"N, 23°59'39"E, 26.05.2015; 264.511



Helianthemum salicifolium



Kozanis, Siatista, 40°16'46"N, 21°39'15"E, 23.04.2019



Helianthemum salicifolium

Xanthi, Semeli, 41°04'53"N, 24°48'30"E, 09.05.2015 259.166



Thessaloniki, Asvestochori, 40°37'30"N, 23°04'24"E, 19.04.2015 254:546



Helianthemum salicifolium

Lassithi, ONO Sisi, 35°18'41"N, 25°31'56"E, 08.04.2017



Helianthemum salicifolium



Kozanis, S Eani, 40°09'19"N, 21°50'14"E, 28.04.2019



Helianthemum salicifolium

Kreta, Irakleion, NO Kouroutes, 35°11'32"N, 24°44'25"E, 26.04.2017



Helianthemum syriacum



Korinthia, Loutraki, 37°59'29"N, 22°58'15"E, 04.05.2018



Helianthemum syriacum

Korinthia, Loutraki, 37°59'29"N, 22°58'15"E, 04.05.2018



Tuberaria guttata

Drama, O Paranesti, 41°15'48"N, 24°32'40"E, 24.05.2015 263.806



Etolia-Akarnania, Platanitis, 38°22'09"N / 21°46'20"E, 30.04.2013



Tuberaria guttata

Drama, O Paranesti, 41°15'48"N, 24°32'40"E, 24.05.2015; 263.806



Tuberaria guttata



Etolia-Akarnania, W Floriada, 39°06'19"N, 21°08'44"E, 04.05.2016



Tuberaria guttata

Lassithi, W Armeni, 35°04'28"N, 26°05'02"E, 17.04.2017; 275.861



Tuberaria guttata

Lassithi, W Armeni, 35°04'28"N, 26°05'02"E, 17.04.2017; 275.861